

Historic, Archive Document

Do not assume content reflects current scientific knowledge, policies, or practices.





*"Let Nature's Rich Beauty Surround
Your Home."—*

H. R. M.

SWEDBERG NURSERY

Service, Quality, Fair Prices Since 1915



See page 22.

Battle Lake



Minnesota

INTRODUCTORY

“Service, Quality, Fair Prices Since 1915”

We deeply appreciate your loyalty and kind patronage, and hope to serve you even better this season.

As you turn the pages of this catalog you may feel assured that every statement made here is backed by a reputable firm of long experience with northern grown nursery stock. Our stock is exactly as represented; our goods are first-class in every respect.

We never send out seconds or inferior grades.

Northern trees and shrubs are **hardy**. Nursery stock that can stand the winters in Otter Tail County can stand the severest weather in the United States.

You will find our prices fair. You may find **lower prices**, but it will be hard to find **better stock**.

Terms of Business and Our Guarantee

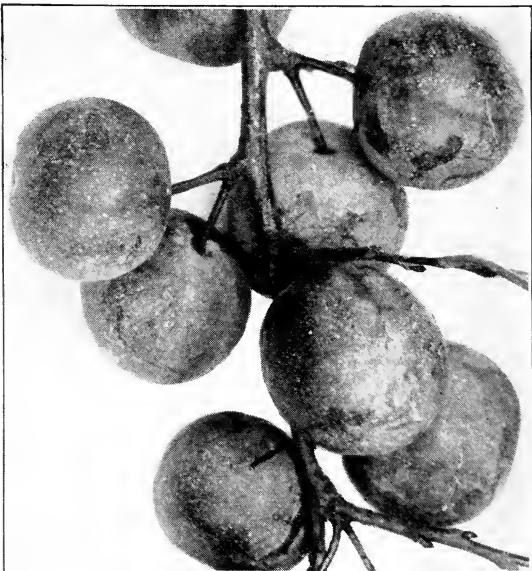
Cash with order unless otherwise agreed. Remit by P. O. or Express Money Orders, Bank Draft or your personal check. Send in your order early and remit when you want goods shipped, if you wish. We give three of one kind and size at dozen rates; fifty at one hundred rates; three hundred at thousand rates. We ship by express or freight; smaller shipments by mail. Allow for postage or tell us to ship C. O. D. for postage, if you want parcel post shipment. State when you want shipment sent. While we exert the greatest care to have everything true to name we will not assume any responsibility for errors that may occur other than to replace any stock which may prove untrue. We replace all stock that fails to grow at one-half list price if reported to us within 30 days after goods are received. This means that it will reach you in a healthy, growing condition, and is a fair deal. All goods are shipped F. O. B. Battle Lake, Minnesota, unless otherwise arranged.

Send your order in as soon as you receive this catalog—the sooner the better. Prices are net F. O. B. Battle Lake, Minnesota. Packing free. Gladiolus and seeds sent postpaid on receipt of price.

When single price is given, for dozen rate multiply by 10. Example: 50c each or \$5.00 per dozen.

Swedberg Nursery

Battle Lake, Minnesota



Compass Cherry-Plums.

Plums

Prof. Hansen's Hybrid Plums

The Plums Without a Plum Pocket

- SAPA.** Blue-black. Solid cherry plum. Very heavy bearer.
OPATA. Red; green meat. Large, fine flavor.
HANSKA. Red, flavor of apricot, fine for canning and preserving.
WANETA. The mammoth red plum. Size of a small crab.
 We have other varieties grown by us. Tell us what you want if you do not find the variety listed.

New Minnesota Hybrid Plums

State Breeding Farm Fruit

- NEW FEEBING PRIZE PLUM.** Large red freestone and earliest plum yet introduced. First time offered.
UNDERWOOD. A cross between Shiro and Wyant, is one of the outstanding members of the new group of hybrid plums. Red oved yellow. Large, semi-cling, juicy, sweet. Early.
TONKA. A cross between Burbank and Wolf, considered one of the best of Minnesota hybrids, light red. Large, midseason, freestone, a good canner. Early.
RED WING. A Burbank and Wolf Cross, it's marked for distinction because of its unusually large fine appearing, light red fruits which are so well adapted to dessert and culinary purposes. The skins and pits are so easily removed that the fruits can readily be sliced and served with sugar and cream, like peaches. Midseason.
MONITOR. A Burbank and native cross, bronze red. Large, late. A delicious fruit and heavy cropper. Late midseason.
RADISSON. A cross between unknown varieties of Prunus Salicina and probably Prunus Americana. It produces a large showy red plum of most delicious flavor, ripening about August 1st. Early.
HENNEPIN. A Satsuma and Americana cross. A dark reddish purple plum covered with dense bloom, giving it a distinctive and attractive appearance, valuable for canning and preserving on account of its rich purplish red flesh. Early.
GOLDEN ROD. A Shiro and Howard Yellow cross, a clear yellow plum, a promising marketing variety because of its firm flesh, large size, attractive color. Late.

We grow other varieties, as Anoka, Elliott, LaCrescent, Mendota, Mound, Winona, etc.; if interested in these they are same price as the other Hybrid Plums.

Other Plums and Cherries

- COMPASS CHERRY.** Red. The hardy plum cherry. Good.
DESOTO. Medium to large; color yellow turning to red when fully ripe; flesh firm and good. Medium to late.
SURPRISE. Fruit large, dark purplish red; flesh firm, tender and of fine quality.
TERRY. Our best Native Plum. Abundant bearer, delicious to eat out of hand. Latest to ripen.
ZUMBRA CHERRY. A sandcherry and pincherry and black sweet cherry cross. Purplish black fruit. Ripe in August. Crisp flesh pleasantly flavored, fine canner. Stone very small.
ST. ANTHONY CHERRY. A sandcherry and Satsuma plum cross. Resembles the Sapa but more attractively colored. Fine flavor. Dull purplish red. Flesh dark red, juicy. Late August.

Prices on Plums and Cherries

| Size | Each | 12 | 25 |
|------------------------|--------|---------|---------|
| Bearing size | \$1.50 | \$15.00 | \$30.00 |
| 5 to 7 ft. | 1.00 | 10.00 | 17.75 |
| 4 to 5 ft. | .75 | 7.00 | 13.50 |
| 3 to 4 ft. | .40 | 4.00 | 7.00 |

6 BEST PLUMS FOR HOME GARDEN \$3.50

- All 3-year-old, 5 to 6 ft. height.
 1 Underwood 1 Feebing Prize
 1 Terry 1 Goldenrod
 1 Monitor 1 Hanska

6 BEST CHERRY-PLUM HYBRIDS \$3.50

- All 3-year-old, 4 to 6 ft. height.
 1 Sapa 1 Compass Cherry
 1 Nicollet 1 Zumbra Cherry
 1 Opata 1 St. Anthony Cherry

15 TREE, PLUM, AND APPLE ORCHARD \$8.00

All 3-year-old, 5 to 6 ft. height.

- | | | |
|---------------------|-----------------|------------------|
| 1 Whitney Crab | 1 Perkins Apple | 1 Terry Plum |
| 1 Patten's Greening | 1 Anoka Apple | 1 Tonka Plum |
| 1 Anisim Apple | 1 Monitor Plum | 1 Underwood Plum |
| 1 McIntosh | 1 Red Wing Plum | 1 Waneta Plum |
| 1 Wealthy | 1 Stella Plum | 1 Feebing Plum |

Apples

"E." "C." designates—E. for "Eating"; C. for "Cooking" or E. and C. good for both eating and cooking. This information is given for our customers as in general they want to know what the variety is good for. Note the "E." or "C."

Summer Apples

- DUCHESS OF OLDENBERG.** E. Good size, yellow, streaked red, juicy, red, sub-acid, productive. Valuable for market.
YELLOW TRANSPARENT. E. Earliest and best; tender, juicy, sprightly, sub-acid.

Autumn Apples

- PATTEN'S GREENING.** C. Large, round, yellowish green with bronze, blush, sub-acid. Very hardy. A good keeper.
WEALTHY. E. and C. Originated in Minnesota. Hardy. Vigorous and very productive. A good keeper.
WOLF RIVER. C. Large, handsome; yellow, striped red, juicy, pleasant, spicy flavor, very hardy.
FOLWELL. E. One of Minnesota State Fruit Breeding Farm apples. Good quality, same season as Wealthy.
HIBERNAL. C. Sour, good for cooking. Tree very hardy.
OKABENA. E. Similar to Duchess, but later and preferred by many to that variety.

Winter Apples

- ANISIM.** E. and C. Season early winter. Color crimson; valuable in the Northwest.
HARALSON. E. and C. One of Minnesota State Fruit Breeding Farm apples. Keeps until spring in a common cellar. Quality very good. Hangs to tree until late.
McINTOSH. E. Medium size, dark red, good quality, juicy, sub-acid.
MALINDA. C. Season late winter; color yellow with red blush. Best winter apple for the North.
NORTHWESTERN GREENING. C. Hardy, yellow, rich, of good size; extra long keeper.
RED WING. (59). E. and C. Very hardy, large, red, splashed.
RHODA. (81). E. and C. Dark crimson. Keeps until April.
PERKINS. (72). E. and C. Keeps until May or June.
GOODHUE. (121). E. and C. Keeps until midwinter, February.
 The last four apples are the famous Perkins Seedlings and are very good and tested to be good.

Crab Apples

- Perfectly hardy, succeed everywhere; early and annual bearers.
HYSLOP. Large, deep crimson; one of the most beautiful; very popular.
FLORENCE. One of the best to plant. Very hardy; an early bearer. Fruit large, red and of good quality. Origin, Minnesota. Tree very hardy.
SWEET RUSSET. Large, roundish oblong, greenish yellow, mild, sweet.
TRANSCENDENT. Immensely productive, bright red; one of the most popular.
WHITNEY. One of the largest, glossy green, splashed carmine; firm, juicy, pleasant, great bearer. Fine to eat out of hand.
DOLGO CRAB. Brilliant red, oblate apples. Suitable for all uses. Tree very attractive with dense dark green foliage.

Prices on Apples and Crab Apples

| Size | Each | 12 | 25 |
|--------------------|--------|---------|---------|
| Bearing size | \$1.50 | \$15.00 | \$30.00 |
| 5 to 7 ft. | 1.00 | 10.00 | 17.75 |
| 4 to 5 ft. | .75 | 7.00 | 13.50 |
| 3 to 4 ft. | .40 | 4.00 | 7.00 |

6 BEST APPLES FOR HOME GARDEN \$3.50

All 3-year-old, 5 to 6 ft. height.

- | | |
|-----------|------------|
| 1 Anoka | 1 Whitney |
| 1 Duchess | 1 McIntosh |
| 1 Wealthy | 1 Perkins |

5 HARDY PEARS \$4.00

\$1.25 each.

- All 3-year-old, 4 to 5 ft. height.
- | | |
|----------|-------------------|
| 1 Aspa | 1 Minnesota No. 1 |
| 1 Mendel | 1 Ming |
| | 1 Samoa |

3 BEST CRAB APPLES FOR HOME GARDEN \$1.75

- 1 Dolgo 1 Whitney 1 Early Strawberry

Currants

- PERFECTION.** Bright red of a large size. Productive, mild sub-acid flavor. Plenty of pulp and few seeds. 40c each.
- FAY'S PROLIFIC.** Large red berry; fine flavor, very prolific, valuable for both home and market.
- WHITE GRAPE.** Berries large to very large, yellowish white color. Sweet, excellent for table. Finest of the white sorts.
- RED CROSS.** A strong growing variety. Cluster long; berry medium to large; bright red; quality good.
- BLACK.** The leading well tested black currant. Excellent quality, strong grower.
- NEW MINNESOTA CURRANT.** (24). Resembles the Perfection but somewhat larger. 50c each.
Strong 2- to 3-year-old plants, 35c each; \$3.50 per doz., except where otherwise noted.

Gooseberries

- HOUGHTON.** A reliable old variety, enormously productive, of vigorous growth. Good quality.
- DOWNING.** Large, handsome, pale green berry of splendid quality. Bush vigorous, strong and upright.
- RED JACKET.** A wonderful cropper. Large, smooth berries. Prolific and hardy.
- PEARL.** A healthful, productive variety. Pale green berries, valuable for home and canning.
- CARRIE.** Vigorous, productive. One of the best old sorts. Large, red berries.
- COMO.** Fruit roundish, ripens green; quality good; holds on bushes a long time without scalding. Minnesota Station fruit. 50c each.
Strong 2- to 3-year-old plants, 35c each; \$3.50 per doz.

Grapes

- BETA.** The "Standard" Hardy Grape. The most widely grown and probably the most profitable grape in the Northwest. A heavy, annual bearer, hardy as the wild grape and producing enormous crops of medium-sized blue-black fruit of good quality. It ripens so early that it may be grown in the far North.
- ALPHA.** A more recent production than Beta and preferred to it by many of those who have grown it. Originated near St. Cloud, Minn. Equal to Beta in hardiness and yield. The introducers of Alpha claim for it a much higher quality than that of Beta. It is worthy of extensive cultivation.
- CONCORD.** Of the Tender Grapes we are growing only the Concord, the most generally satisfactory of the tender grapes. A vigorous grower and a heavy producer of good quality fruit which is far superior to the hardy grapes in size and flavor. Concord is a standard grape everywhere.
Price: Small, 25c each; 2 yr., 40c each; 3 yr., 50c each.
Send for Instruction Book, "How to Plant, Grow, Prune and Care for Grapes"—it's FREE.

Raspberries and Blackberries

MINNESOTA STATION FRUIT

- NEW CHIEF RASPBERRY.** (223).
A Latham seedling. Ten days earlier than Latham.
- LATHAM RASPBERRY.** (3). The leading Red Raspberry in size, color, quality, hardiness and productivity. The superior kind.

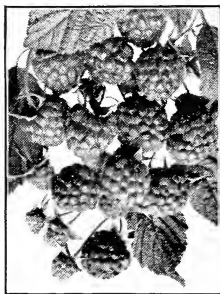
- CUMBERLAND.** The best blackcap raspberry.
- KING.** Early; red; large berries, very hardy, good quality.
- ST. REGIS.** Red; the so-called Ever-bearing.
- SUNBEAM.** Very hardy; red; early variety. Good flavor.

- LUCRETIA DEWBERRY.** Hardy trailing blackberries.

- ELDORADO and OLDER BLACKBERRY.** The two best varieties, should have winter protection.

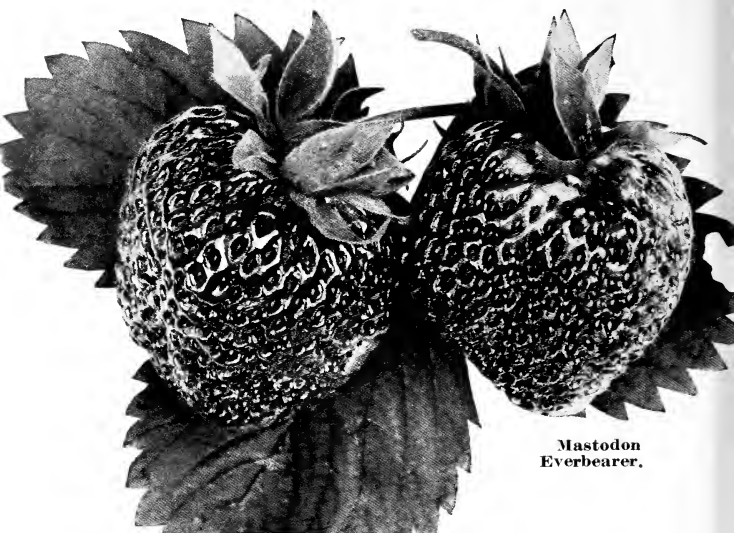
Price: 12, 75c; 25, \$1.75; 50, \$3.00; 100, \$6.00; 500, \$21.00; 1000, \$37.00.

Strong, transplanted Raspberry plants double above prices.



New Chief.

Strawberries



**Mastodon
Everbearer.**

Everbearing Varieties

CHAMPION. Quality of the best; large size, productive, and hardy.

PROGRESSIVE. Good quality, sweet, very productive and hardy.

Prices: \$2.00 per 100; \$5.00 per 300; \$15.00 per 1000.

MASTODON. Berries large, uniform in size, bears heavily on runner plants first year. Considered one of the best everbearers. \$3.00 per 100; \$6.00 per 250; \$23.00 per 1000.

June-Bearing Varieties

DR. BURRILL. A very good red berry.

SENATOR DUNLAP. The best old standby; quality excellent.

PREMIER. With its deep roots it makes a good variety, good quality.

Price: \$1.25 per 100; \$5.00 per 500; \$9.00 per 1000.

RED GOLD, BLAKEMORE, BEAVER. \$2.00 per 100.

We sell 50 plants at the hundred rate. Prepaid parcel post.

Rhubarb

This deserves to be ranked among the best early fruits in the garden. It affords the earliest material for pies and tarts, continues long in use, is valuable for canning. We offer the large juicy red California Sweet. 50c clump, 6 for \$1.75. Common kinds at 15c each; 12 for \$1.00.

Asparagus

WASHINGTON. This Giant Asparagus is the result of 14 years of plant breeding by the United States Department of Agriculture in an effort to develop a rust-resistant Asparagus, surpassing all other varieties in yield and quality. It is one of the most palatable and tender varieties known, producing enormous shoots of a brilliant dark green color which retain their tenderness and do not branch until well above cutting height. It has proved itself to be a tremendous producer and best of all it is entirely free from rust. Doz., 50c; 1½ yr., \$2.00 per 100; 2½ to 3 yr., \$3.00 per 100.

CHIVES OR GRASS ONION

The leaves are slender and appear very early in the spring, and may be shorn several times during the season. The Chives are equal to the Onion for flavoring soups and salads. 15c per doz.; clumps, 25c each.

Horseradish Roots

Set roots vertically, small end down. Cultivate thoroughly until tops cover ground. Grown extensively by home gardeners as well as market gardeners. 25c each; root cuttings, 12 for 25c.



Hydrangea Arborescens—Hills of Snow.

Flowering Shrubs

- BARBERRY, Red-Leaved.** Very hardy. Three sizes. 50c, 75c, and \$1.25 each.
- BUFFALOBERRY** (*Shepherdia*). Upright flowering shrub, sometimes almost tree form. Tall, thorny. Silvery foliage. Very hardy. Good for bold positions in front of shrubby masses.
- COTONEASTER Acutifolia.** A dense growing shrub with small glossy dark green leaves. Hardy; stands partial shade. Grows 6 to 8 feet high.
- CRANBERRY, High Bush** (*Viburnum opulus*). Very hardy. White flowers of early summer are followed by brilliant red edible berries resembling cranberries.
- DOGWOOD, Red-Twigged** (*Cornus alba sibirica*). Free growing. Bark is a showy red in early spring. Dainty white flowers come early in summer, followed by whitish blue berries. 6 to 10 feet.
- DOGWOOD, Golden Barked Osier.** Grows 6 to 8 feet tall and makes a good combination when planted with the Red-Twigged Dogwood, as the twigs are bright yellow; an effective contrast.
- DOGWOOD, variegata** (*Variegated Dogwood*). Fine variegated shrub, leaves broadly margined with white. XX, 50c; XXX, 75c.
- ELDER, Cut Leaf** (*Sambucus nigra laciniata*). Half drooping leaves are fernlike. Especially effective in masses.
- ELDER, Golden** (*S. nigra aurea*). Golden leaves. Flowers white. in flat topped cymes in early summer. Prunes well. 6 to 8 feet.
- HAWTHORN.** Bears thickly clustered white flowers in May. Produces edible red berries in September. Prunes well.
- HONEYSUCKLE, Upright** (White or Pink). White or pink flowers which contrast beautifully with the foliage. Blossoms in June.
- HYDRANGEA, Arborescens Sterilis** (Also Hills of Snow, Summer Hydrangea, or Snowball Hydrangea). The blooms are of the very largest size, of pure snow white color, and the foliage is finely finished. One of its most valuable characteristics is its coming into bloom just after the passing of all the early spring shrubs. XX, 75c.
- H., Paniculata Grandiflora.** These plants are absolutely hardy, grow in any soil and bloom the same year they are set out. They flower abundantly, bearing hundreds of immense panicles of bloom. White turning to rose in autumn. An annual shortening of branches tends to increase the size of the flowers. Very fine and valuable for cemetery planting. XX, 50c; XXX, 75c; XXXX, \$1.00.
- LILAC, Hungarian** (*Josikaea*). Blue flowers in June after other lilacs have ceased blooming. Does not sucker from roots. XX, 75c; XXX, \$1.00.
- L., Pres. Grevy.** Double. Clusters large, full, pale wisteria violet. XXX, \$1.00.
- L., Common Purple.** Bluish purple flowers, well known.
- L., Common White.** Cream-white flowers.
- L., Persian Purple.** Of more slender growth and finer foliage than the common lilac. Flowers purple in large, loose panicles. Does not sucker from roots. XX, 50c; XXX, 75c; XXXX, \$1.00.

SEE PRICES ON PAGE 8.

Swedberg Nursery, Battle Lake, Minnesota

FLOWERING SHRUBS—Continued.

- MOCK ORANGE** (*Philadelphus*). Bears fragrant, creamy white flowers in great profusion. Will grow high enough to make screens. We grow these in several varieties.
- SNOWBALL, Common.** A popular shrub. Makes a large bush. Bears balls of pure white flowers in June.
- SNOWBERRY, Red and White.** White or rose flowers are produced in great abundance during summer. White berries which follow are borne on the bush until autumn.
- SUMAC, Cut-Leaved** (*Rhus typhina*). Fernlike foliage is brilliantly colored in autumn. 8 to 10 feet.
- SUMAC, Staghorn.** A picturesque form, with handsome leaves, and deeply cut leaflets.
- PRUNUS Triloba** (Flowering Plum; Rose Tree of China). Flowers in May are double, delicate pink, nearly an inch in diameter, thickly set on branches. **XX, 75c; XXX, \$1.00; XXXX, \$1.50.**
- VIBURNUM Lantana** (Wayfaring Tree). A shrub growing 8 to 10 feet tall. Heart-shaped leaves and showy flower clusters, followed by red berries, which later turn to black.
- NEW SIBERIAN ALMOND.** Bearing pink blossoms before the foliage appears in the spring. Very early and beautiful. Very hardy. **50c and \$1.00 grades.**

Spiraea

Ten Hardy Varieties

- SPIRAEA, Anthony Waterer.** A small dwarf variety, 1½ ft., covered with flat heads of pink flowers. Used for edging and in front of shrubbery. **50c and 75c.**
- S. Arguta.** Bears pure white flowers early in spring. Narrow, bright green leaves assume yellow and orange tints near end of season.
- S. Billiardi.** Narrow, dense spikes of bright pink flowers. A strong grower. Good for cut flowers.
- S. Callosa Alba.** Dwarf. Pure white; blooms all summer.
- S., Golden or Aurea.** One of the best of our yellow-leaved shrubs. Holds its color all summer.
- S., Meadow Sweet** (*Filipendula*). One to three feet high. Blooms June-July. Flowers white, about ¾ inch across.
- S. Thunbergi.** The earliest of the Spireas to bloom. Of a rounded, graceful form. Branches slender and somewhat drooping. Foliage narrow and yellowish green, changing to delicate purple in fall. Flowers pure white.
- S. Sorbifolia or Ash-Leaved.** Long showy panicles of white flowers. Grows 6 to 7 feet.
- S. Van Houttei.** Graceful, with long, drooping sprays, thickly studded with handsome, pure white flowers; hence its popular name, "Bridal Wreath." The finest spirea of them all.
- S., New Korean** (*Trichocarpa*). Blossoms a little later than Van Houttei and has a large drum-shaped cluster of white flowers which are distinctly marked in the center so that it does not have the dead white effect. **50c and \$1.00 size clumps.**

PRICES ON ORNAMENTAL FLOWERING SHRUBS

Except Where Otherwise Noted:

XX grade, 35c each; \$3.50 for 12; \$12.50 for 50.

XXX grade, 50c each; \$5.00 for 12; \$18.00 for 50.

XXXX grade, 75c each; \$7.50 for 12; \$28.00 for 50.

XXXXX grade, \$1.00 each; \$10.00 for 12.

XX grade runs about 2 ft. high; XXX grade runs about 3 ft. high, etc., except for dwarf varieties. At any rate we give a very strong shrub for the price.

COLLECTION 9 NAMED LILACS \$4.75

- | | |
|-----------------------|------------------------|
| 1 Purple Lilac | 1 Persian Purple Lilac |
| 1 White Lilac | 1 Persian White Lilac |
| 1 Pink Siberian Lilac | 1 Japanese Tree Lilac |
| 1 Rouen Lilac | 1 Hungarian Lilac |
| 1 Villosa Lilac | |

5 FRENCH HYBRID LILACS \$2.50

- 1 Jeanne d'Arc. Double white.
- 1 Charles X. Single red-purple.
- 1 Michael Buchner. Double pale lilac.
- 1 Mme. Chatenay. Double white.
- 1 Ludwig Spaeth. Single crimson-purple.

Hedge Plants

Priced per 100—25 at 100 rate.

| | 8-12 in. | 12-18 in. | 18-24 in. | 2-3 ft. |
|---|----------|-----------|-----------|---------|
| Barberry Thunbergi | \$8.00 | \$15.00 | \$25.00 | \$40.00 |
| Cotoneaster | 8.00 | 10.00 | 18.00 | 25.00 |
| Buckthorn | 4.00 | 6.00 | 8.00 | 10.00 |
| Caragana | 4.00 | 6.00 | 8.00 | 9.00 |
| Spirea Van Houtte | | 7.50 | 14.00 | 19.00 |
| Honeysuckle, Morrowi or Tartarian | | 12.00 | 16.00 | 25.00 |

Ornamental Trees

BASSWOOD (Linden). One of the most beautiful deciduous trees grown. Holds its leaves well beyond most other trees. Very hardy.

| | Each | Per 2 | | Each | Per 2 |
|---------------|--------|--------|----------------|--------|--------|
| 4- 6 ft. | \$0.80 | \$1.50 | 8-10 ft. | \$2.00 | \$4.00 |
| 6- 8 ft. | 1.50 | 3.00 | 10-12 ft. | 3.00 | 5.50 |

BIRCH, White. A graceful tree with white bark. A very desirable lawn tree. Hardy.

| | Each | Per 10 |
|--------------|--------|--------|
| 4-6 ft. | \$0.90 | \$8.50 |

BIRCH, Cut Leaf Weeping. The most graceful tree of them all.

| | Each | Per 4 |
|----------------------------|--------|--------|
| 4- 5 ft. transplants | \$1.50 | \$4.75 |
| 5- 6 ft. transplants | 1.75 | 6.75 |
| 6- 8 ft. transplants | 2.50 | 8.00 |
| 8-10 ft. transplants | 3.75 | 13.00 |

BOX ELDER (Ash Leaf Maple; Manitoba Maple). Valued in many sections on account of its vigor under difficult conditions. Fast growing and tenacious.

| | Each | 10 | 100 | 1000 |
|----------------------------|------|------|--------|---------|
| 18-24 in. seedlings | | | \$1.70 | \$14.00 |
| 2- 3 ft. seedlings | | | 2.20 | 20.00 |
| 3- 4 ft. seedlings | | | 2.70 | 25.00 |
| 5- 6 ft. transplants | .50 | 4.50 | 42.50 | |

CHERRY (May Day Tree). Hardy Asiatic tree. Popular variety with conspicuous bright colored flaky bark. White flowers, black fruit.

| | Each | Each |
|--------------------------|--------|---------------------------------|
| 4- 5 ft. seedlings | \$0.75 | 6-8 ft. transplants \$1.50 |
| 5- 6 ft. seedlings | 1.00 | 8-10 ft. transplants 2.00 |

CHINESE ELM. New; hardy. Extremely rapid growing shade tree. It is quite similar to the American Elm in appearance, having the same great height and majesty with innumerable slender branches and narrow elliptical leaves. For grace and beauty it compares favorably with the Birches.

| | Each | 10 | 50 | 100 |
|----------------------------|------|------|--------|--------|
| 6-12 in. seedlings | | | \$1.25 | \$2.10 |
| 12-18 in. seedlings | | | 1.50 | 2.80 |
| 18-24 in. seedlings | | .70 | 2.00 | 3.80 |
| 2- 3 ft. seedlings | | .90 | 2.50 | 4.80 |
| 3- 4 ft. seedlings | | 1.00 | 3.40 | 6.00 |
| 3- 4 ft. transplants | .30 | 2.50 | 12.00 | 20.00 |
| 4- 5 ft. transplants | .45 | 3.50 | 17.00 | 33.00 |

ELM, American White. Largely used as shade and street tree. The transplanted stock as here offered is from selected planting stock of the type demanded for street planting.

| | Each | 10 | 100 | 1000 |
|----------------------------------|------|-------|--------|---------|
| 18-24 in. seedlings | | | \$1.50 | \$13.00 |
| 2- 3 ft. seedlings | | | 2.20 | 20.00 |
| 3- 4 ft. seedlings | | | 3.50 | 30.00 |
| 5- 6 ft. transplants | .75 | 6.50 | 60.00 | |
| 6- 8 ft. transplants | 1.00 | 9.00 | 80.00 | |
| 8-10 ft. transplants | 1.50 | 14.00 | 130.00 | |
| 10-12 ft. transplants | 2.00 | 19.00 | 180.00 | |
| 2 in. caliper transplanted | 4.00 | 39.00 | 380.00 | |

HORSECHESTNUT (Buckeye). Northern acclimated type. Produces a small tree of roundish form. Blossoms white in large spikes.

| | Each |
|---------------------------|--------|
| 2-3 ft. transplants | \$0.75 |
| 3-4 ft. transplants | 1.00 |
| 4-5 ft. transplants | 1.75 |

MAPLE, Sugar or Hard. Upright. Round top. More dense than any other maple. Foliage turns to brilliant yellow and red shades in autumn. Very hardy.

| | Each | Each |
|---------------|--------|----------------------|
| 2- 3 ft. | \$0.30 | 6-10 ft. \$1.75 |
| 3- 5 ft. | .50 | |

MAPLE, Schwedler's (Purple Maple). Leaves attractive, particularly in spring with their crimson-red and purple tones.

| | Each | Each |
|---------------------------|--------|----------------------------------|
| 6- 8 ft. transplants | \$4.50 | 8-10 ft. transplants \$6.00 |

SILVER MAPLE (Soft Maple). Tall and very rapid growing tree. Broad form and quick shade. Valuable nurse tree in wood lot plantings.

| | Each | 10 | 100 | 1000 |
|---------------------------------|------|-------|--------|---------|
| 18-24 in. seedlings | | | \$0.75 | \$16.00 |
| 2- 3 ft. seedlings | | | 2.50 | 24.00 |
| 3- 4 ft. seedlings | | | 4.00 | 38.00 |
| 5- 6 ft. transplants | .50 | 4.50 | 40.00 | |
| 6- 8 ft. transplants | .75 | 6.50 | 60.00 | |
| 8-10 ft. transplants | 1.00 | 9.50 | 90.00 | |
| 10-12 ft. transplants | 1.50 | 14.00 | 135.00 | |
| 12-15 ft. transplants | 2.00 | 19.00 | 180.00 | |
| 2 in. caliper transplants | 2.00 | 29.00 | | |

Swedberg Nursery, Battle Lake, Minnesota

ORNAMENTAL TREES—Continued.

MOUNTAIN ASH. Grows 18 to 20 ft. Produces bright red berries. Excellent for planting among shrubs.

| | Each | | Each |
|---------------|--------|---------------|--------|
| 3- 4 ft. | \$0.40 | 6- 8 ft. | \$0.55 |
| 4- 6 ft. | .45 | 8-10 ft. | .85 |

MOUNTAIN ASH (Swedish Oxel Berry). A variant of European Mountain Ash. Small tree with rich, deep green foliage and bright red berries.

| | Each |
|---------------------------|--------|
| 4-5 ft. transplants | \$1.75 |
| 5-6 ft. transplants | 2.75 |

POPLAR, Norway. Most used of Poplars for fast growing shade trees, alternated with permanent trees. Also valuable in wind-breaks and wood lot plantings.

| | Each | 10 | 100 | 1000 |
|----------------------------|------|--------|--------|---------|
| 18-24 in. whips | | \$0.35 | \$3.00 | \$28.00 |
| 2- 3 ft. whips | | .45 | 4.00 | 38.00 |
| 3- 4 ft. whips | | .60 | 5.50 | 50.00 |
| 4- 5 ft. transplants | | 1.00 | 8.00 | 75.00 |
| 5- 6 ft. transplants | .35 | 3.25 | 30.00 | |
| 6- 8 ft. transplants | .55 | 5.00 | 48.00 | |

P., Bolleana. Fast grower. 60 to 80 ft. in a straight, narrow column. Leaves deep green on upper surface and silvery white beneath. Great height with small spread, involving small ground area.

| | Each | 10 |
|-----------------------------|--------|---------|
| 6- 8 ft. transplants | \$1.50 | \$14.00 |
| 8-10 ft. transplants | 2.25 | 24.00 |
| 10-12 ft. transplants | 2.80 | 29.00 |

P., Lombardy (Italian Poplar). Tall growing tree. Especially fine for landscape effects. Used considerably in screens and backgrounds.

| | Each | 10 |
|-----------------------------|--------|--------|
| 6- 8 ft. transplants | \$0.75 | \$7.00 |
| 8-10 ft. transplants | 1.15 | 12.00 |
| 10-12 ft. transplants | 1.40 | 14.50 |

P., Silver. Rapid grower. Leaves glossy white underneath. Root inclined to spread where unattended.

| | Each | | Each |
|--------------------------|--------|--------------------------|------|
| 4-5 ft. transplants | \$0.35 | 6-8 ft. transplants | .65 |
| 5-6 ft. transplants | .45 | | |

RUSSIAN OLIVE. Here is a variety that adapts itself to almost any purpose for which a tree can be used. A small tree with silvery green foliage. Makes a charming contrast with the green of lawn and shrubbery.

| | Each | 10 | 50 | 100 | 1000 |
|----------------------------|------|------|--------|--------|---------|
| 6-12 in. whips | | | \$1.50 | \$2.75 | \$13.50 |
| 12-18 in. whips | | | 2.00 | 3.40 | 15.00 |
| 18-24 in. whips | | .90 | 3.00 | 5.50 | 22.00 |
| 2- 3 ft. whips | .20 | 1.30 | 4.50 | 8.00 | |
| 3- 4 ft. transplants | .30 | 2.70 | 11.00 | 20.00 | |
| 4- 5 ft. transplants | .45 | 4.00 | 16.00 | 30.00 | |
| 5- 6 ft. transplants | .55 | 5.00 | | | |

SIBERIAN CRAB. Small spreading tree with clusters of pink-white drooping flowers. The fruit is yellow or red. Very hardy.

| | Each | 12 | 25 |
|--------------------|--------|---------|---------|
| Bearing size | \$1.50 | \$15.00 | \$30.00 |
| 5-7 ft. | 1.00 | 10.00 | 17.75 |
| 4-5 ft. | .75 | 7.00 | 13.50 |
| 3-4 ft. | .40 | 4.00 | 7.00 |

WILLOW, Laurel Leaf. Splendid ornamental tree. Dwarfish in effect with large glossy leaves. Very hardy.

| | Each | 10 | 100 | 1000 |
|----------------------------|------|--------|--------|---------|
| 18-24 in. whips | | \$0.35 | \$3.00 | \$28.00 |
| 2- 3 ft. whips | | .45 | 4.00 | 38.00 |
| 3- 4 ft. whips | | .60 | 5.50 | 50.00 |
| 4- 5 ft. transplants | | 1.00 | 8.00 | 75.00 |
| 5- 6 ft. transplants | .35 | 3.25 | 30.00 | |
| 6- 8 ft. transplants | .55 | 5.00 | 48.00 | |

W., Niobe Weeping. Remarkable form of golden bark willow with very long slender drooping branches. Beautiful in bloom, in leaf and in winter.

| | Each | 2 |
|---------------------------|--------|--------|
| 5-6 ft. transplants | \$0.80 | \$1.50 |
| 6-8 ft. transplants | 1.00 | 1.90 |

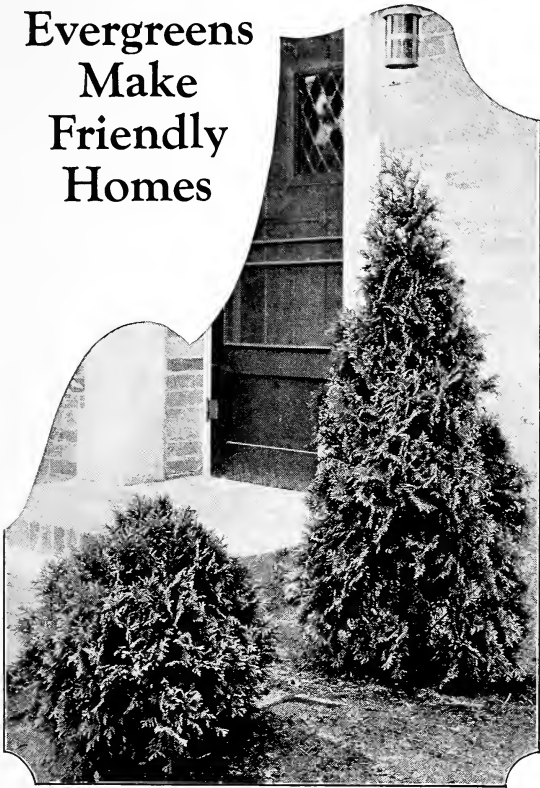
WINDBREAK WILLOW, Golden Laurel Leaf. For windbreaks we consider this willow by far the best for western planters.

| | 100 | 500 |
|----------------|-------------------|---------|
| 18-24 in. | \$3.00 | \$10.00 |
| 3- 4 ft. | 5.00 | 20.00 |
| Cuttings | Per 250, \$1.50.. | |

WALNUT, Black. This great American tree now figures largely in highway and wood lot plantings. Everyone should possess at least one Black Walnut tree.

| | Each | 12 |
|---------------------------------|--------|---------|
| 6- 8 ft. transplants | \$1.10 | \$10.00 |
| 8-10 ft. transplants | 1.60 | 15.00 |
| 10-12 ft. transplants | 2.20 | 21.00 |
| 2 in. caliper transplants | 3.50 | |

Evergreens Make Friendly Homes



Globe Arbor-Vitae.

Pyramidal Arbor-Vitae.

ARBOR-VITAE, Globe. Low growing form with natural round heads. Useful in borders and in front of evergreen groups.

Trees Without Earthball

| | Each | 10 |
|------------------------------------|--------|--------|
| 9-12 in. transplants | \$0.40 | \$3.50 |
| 12-15 in. twice transplanted | 1.00 | 8.00 |
| 15-18 in. twice transplanted | 1.75 | 15.00 |

Specimen Trees B&B

| | Each | 10 |
|----------------|--------|---------|
| 12-15 in. | \$2.00 | \$17.50 |
| 15-18 in. | 3.00 | 27.50 |

ARBOR-VITAE, Pyramidal. Natural columnar tree without pruning. Contrasts with spreading pines, spruces and junipers. Often planted in pairs. useful for evergreen effect, set close to buildings and walks.

Trees Without Earthball

| | Each | 2 |
|------------------------------------|--------|--------|
| 9-12 in. transplants | \$0.40 | \$0.75 |
| 12-15 in. transplants | .60 | 1.15 |
| 15-18 in. twice transplanted | 1.00 | 1.80 |
| 18-24 in. twice transplanted | 1.50 | 2.75 |
| 24-30 in. twice transplanted | 2.25 | 4.25 |

Specimen Trees B&B

| | Each | 2 |
|----------------|--------|--------|
| 12-18 in. | \$1.75 | \$3.25 |
| 18-24 in. | 2.50 | 4.75 |
| 24-30 in. | 3.50 | 6.50 |
| 30-36 in. | 5.00 | 9.50 |
| 36-42 in. | 6.00 | 11.75 |
| 42-48 in. | 7.50 | 14.50 |
| 48-54 in. | 10.00 | 19.00 |

Swedberg Nursery, Battle Lake, Minnesota

EVERGREENS—Continued

CEDAR, Red (*Juniperus Virginiana*). Broadly pyramidal but may be sheared to form. Bright green in summer, foliage turning to bronze in winter.

Specimen Trees B&B

| | Each | 2 |
|----------------|--------|--------|
| 12-18 in. | \$2.00 | \$3.75 |
| 18-24 in. | 3.00 | 5.75 |
| 24-30 in. | 4.50 | 8.50 |

FIR, Balsam. The ideal Christmas tree. Tall, fast pyramidal growth. May be held in check by pruning. Fragrant boughs for house decoration.

Trees Without Earthball

| | Each | 2 |
|----------------|--------|--------|
| 12-18 in. | \$0.70 | \$1.30 |
| 18-24 in. .. | .90 | 1.75 |
| 2- 3 ft. | 1.30 | 2.50 |
| 3- 4 ft. .. | 2.00 | 3.50 |

Specimen Trees B&B

| | Each | 2 |
|----------------|--------|--------|
| 18-24 in. | \$2.00 | \$3.75 |
| 2- 3 ft. | 3.50 | 6.75 |
| 3- 4 ft. | 5.00 | 9.50 |

JUNIPER, Native Upright. Distinct from preceding variety; makes a spreading tree but upright in form.

Trees Without Earthball

| | Each | 2 |
|-----------------------------|--------|--------|
| 9-12 in. transplants | \$0.45 | \$0.85 |
| 12-15 in. transplants | .65 | 1.25 |

PINE, Austrian. Much used in lawn planting on account of its deep green color and the striking effects of its long needles borne on stout branches.

Specimen Trees B&B

| | Each | 2 |
|--|------------------|------|
| 12-18 in. | \$2.00 | 3.00 |
| 18-24 in. | 3.00 | 4.00 |
| 2- 3 ft. | 4.00 | 4.00 |
| 9-12 in. seedlings, transplanted | Per 100, \$13.00 | |

P., Mugho (Dwarf Pine). Well known, many stemmed type of pine. Invaluable for all border planting and rock gardens. Characteristic pine foliage in small space.

Specimen Trees B&B

| | Each | 2 |
|----------------|--------|--------|
| 9-12 in. | \$2.00 | \$3.75 |
| 12-18 in. | 3.00 | 5.50 |
| 18-24 in. | 4.00 | 7.50 |

P., Ponderosa (Bull Pine). Resembles Austrian Pine, and generally hardier. Very long needles; produces bold effect in landscape.

Specimen Trees B&B

| | Each | 2 |
|------------------------------------|------------------|------|
| 18-24 in. | \$1.50 | 3.00 |
| 2- 3 ft. | 3.00 | 5.00 |
| 3- 4 ft. | 5.00 | 5.00 |
| 3 yr. transplanted seedlings | Per 100, \$15.00 | |

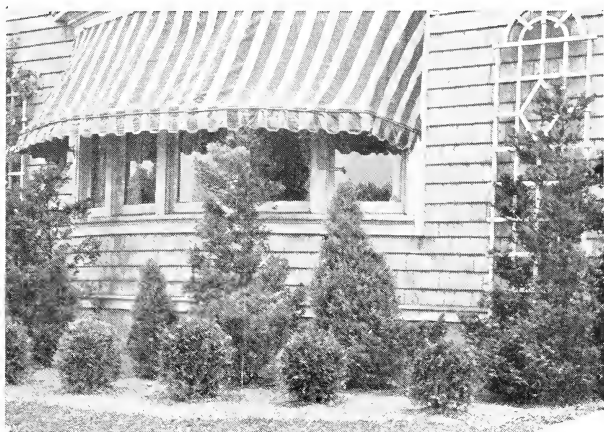
SPRUCE, Black Hills. Hardest windbreak spruce and highly ornamental as specimen or in groups. Dense branching habit, and uniform conical shape.

Trees Without Earthball

| | 10 | 100 |
|---------------------------------|--------|--------|
| 4- 6 in. transplants | \$0.75 | \$7.00 |
| 6- 9 in. transplants | 2.50 | 20.00 |
| 9-12 in. twice transplanted .. | 4.50 | 40.00 |
| 12-18 in. twice transplanted .. | 8.00 | 75.00 |
| 18-24 in. twice transplanted .. | 12.50 | 100.00 |

Specimen Trees B&B

| | Each | 10 | 100 |
|----------------|--------|---------|----------|
| 12-18 in. | \$1.50 | \$12.50 | \$115.00 |
| 18-24 in. | 2.00 | 17.50 | 165.00 |
| 24-30 in. | 3.00 | 27.50 | 265.00 |
| 30-36 in. | 4.00 | 37.50 | |
| 3- 4 ft. | 5.00 | | |



SPRUCE—Continued.

S., Colorado Blue. Bright blue foliage and a remarkable branch structure combine to make this one of the most planted of evergreens. Trees offered here are all close selection for brightest blue color.

Specimen Trees B&B

| | Each | 2 |
|----------------|--------|--------|
| 12-18 in. | \$4.00 | \$7.75 |
| 18-24 in. | 6.00 | 11.75 |
| 24-30 in. | 9.00 | 17.75 |

S., Colorado Green. The same tree as "Colorado Blue" except that the foliage is a vivid green. Much used in groups with the "Blue" for color contrast.

Specimen Trees B&B

| | Each | 2 |
|----------------|--------|--------|
| 12-18 in. | \$3.00 | \$5.50 |
| 18-24 in. | 4.00 | 7.50 |
| 24-30 in. | 5.00 | 9.50 |
| 30-36 in. | 6.00 | 11.50 |
| 36-42 in. | 8.00 | 15.50 |
| 42-48 in. | 10.00 | 19.00 |

S., Norway (Picea excelsa). Rapid grower, thrifty; heavy masses of deep green foliage. Valuable for windbreak, woodlot and forestry planting.

Trees Without Earthball All Transplanted Stock

| | |
|--------------------|---------|
| 100 12-15 in. | \$14.00 |
| 250 12-15 in. | 28.00 |
| 100 15-18 in. | 20.00 |
| 250 15-18 in. | 40.00 |
| 100 18-21 in. | 25.00 |
| 250 18-21 in. | 50.00 |
| 100 21-30 in. | 30.00 |
| 250 21-30 in. | 60.00 |

6 EVERGREENS FOR \$5.00

| | |
|--------------------------------------|------------------------------------|
| 1 Norway Spruce, 24-30 in. | 1 Austrian Pine, 18-24 in. |
| 1 Black Hills Spruce, 12-18 in. | 1 Balsam Fir, 2-3 ft. |
| 1 Juniper, native upright, 12-15 in. | 1 Pyramidal Arbor-Vitae, 15-18 in. |

ENTRANCE OR DOORWAY GROUP, \$18.00

All Specimen Trees B&B

| | |
|------------------------------------|--------------------------------|
| 2 Pyramidal Arbor-Vitae, 30-36 in. | 2 Mugho Pine, 12-15 in. |
| | 2 Globe Arbor-Vitae, 18-24 in. |

FIVE PINES, \$12.00

| | |
|---------------------------|----------------------------|
| 2 Mugho Pine, 12-15 in. | 2 Austrian Pine, 18-24 in. |
| 1 Ponderosa Pine, 2-3 ft. | |

PRICES OF SEEDLING EVERGREENS

| | 25 | 50 | 100 |
|----------------------------|--------|--------|--------|
| Blue Spruce | \$3.00 | \$5.00 | \$8.50 |
| Black Hills Spruce | 2.00 | 3.75 | 6.00 |
| Norway Spruce | 1.50 | 2.75 | 5.00 |
| Ponderosa, Bull Pine | 1.60 | 3.00 | 5.90 |
| Austrian Pine | 1.50 | 2.75 | 5.00 |
| Mugho Pine | 1.50 | 2.75 | 5.00 |
| Red Cedar | 1.20 | 2.00 | 3.50 |
| Arbor-Vitae, Globe | 1.20 | 2.00 | 3.50 |



Shasta Daisy.



Sweet William.



Coreopsis.

Hardy Perennial Plants

All plants not otherwise priced: Extra strong at 30c each; \$3.00 per 12. Medium at 25c each; \$2.00 per 12. In 100 lots at \$16.00. 50 at 100 rate.

ACHILLEA, The Pearl. White flower, blooms all summer.

AQUILEGIA (Columbine). Many colors, long spurred.

ASTERS. Annuals. Not hardy, all colors mixed. 40c per doz.

ASTERS, Mixed, many colors, hardy, late bloomer.

BLEEDING HEART. 60c each; 5 for \$2.50.

BOLTONIA. White flowers, late fall. Grows 4 ft. high.

CAMPANULA. Bell-shaped flowers, blue and light colors.

CANNA. Roots, broad leaves, red and yellow flowers. \$1.90 per 12; \$6.00 per 50. Store in cellar over winter.

CANTERBURY BELLS. Blue and white.

CARNATIONS, Hardy. Red, white, pink, and yellow.

CHRYSANTHEMUM. In red, pink, white, and yellow.

COREOPSIS. Yellow, daisy-like flowers.

DAISY. Fall blooming. 4 ft.

DELPHINIUMS, Gold Medal Hybrids.

D., Vanderbilt Hybrids.

D., Wrexham Hybrids.

D., English Hybrids.

D., Langdon & Blackmore Hybrid.

D., Summer Cloud. New white.

DIGITALIS (Foxglove). Mixed colors.

GAILLARDIA. Many shades and colors. A free bloomer.

GOLDEN GLOW. Beautiful double yellow flowers.

GYSOPHILA, Paniculata (Baby's Breath). Fine for filler amongst cut flowers. Double flowers. 50c per root.

HEMEROCALLIS. Hardy, lily-like, orange flowers.

HIBISCUS. Half hardy, immense flowers with crimson eye.

HOLLYHOCKS. Double, single, in many colors.

LILIUM, Auratum (Gold Banded Lily). 40c each; \$3.50 per 12.

L., Candidum (Madonna Lily). Early white. Strong bulbs, 40c each.

L., Elegans. Dark red flowers, grows 1½ ft. high. Beautiful.

L., Regale (Regal Lily). Very fragrant, white flowers. Hardy. Large bulbs, 40c each; small bulbs, 25c each.

L., Rubrum. White with ruby spots. Blooms August. Large bulbs, 40c each.

L., Tigrinum (Tiger Lily). Red flowers, black spotted. Late.

LILY-OF-THE-VALLEY. Creamy white. Early. Strong clumps.

LUPINE. Blue or white flower spikes.

PANSY PLANTS. Mixed colors. 50c per doz.

PENTSTEMON GRANDIFLORA. A beautiful native flower of Minnesota. Flower spikes 2 to 3 ft. tall. Lavender bell-shaped flower similar to Digitalis and is known as Native Digitalis with us. Foliage waxy, shiny, green all winter. We want to introduce this hardy flower to our many friends and are offering them at a very low price. 15c each; 75c per doz.

PLATYCODON (Balloon Flower). Blue and white.

POPPY, New Sky Blue. Latest novelty in perennials. Color sky-blue; a ring of golden anthers adds to the beauty of the blooms. Flowers fully 4 inches across. Will withstand any degree of frost. Seed, retail pkt., \$1.00. Plants delivered fall 1932 or later, 35c each; or \$3.50 per doz.

POPPY, Oriental. Scarlet flowers, very showy. Large blooms.

PYRETHRUM, Hybrid. Daisy-like flowers, many colors.

SHASTA DAISY, Alaska. White, dwarf.

SWEET WILLIAM. Assorted colors.

YARROW. Rosy pink flowers, July to October, in dense heads.



Phlox

Strong field-grown plants.

- B. COMTE.** Satiny rich wine-red; tall. 35c each.
BETTY LOU. (New). Bright orange-scarlet, claret eye.
BRIDESMAID. White, carmine center.
CHAMPS ELYSEE. Very deep purple.
ECLAIREUR. Purple-crimson with rays of light; tall.
ENCHANTRESS. Bright salmon-pink.
FERNAND CORTEZ. Deep bronzed crimson; tall.
GEN. VAN HEUTZ. Orange-scarlet, light center; tall.
INNOCENCE. (New). Pure white; tall. 40c each.
JULES SANDEAU. Rich rose-pink; rather dwarf.
MISS LINGARD. Earliest white; tall.
MME. BEZANSON. Aniline-red.
MRS. HARDING. Deep salmon-pink.
MRS. JENKINS. Pure white.
PROF. VIRCHOW. Carmine, overlaid orange-scarlet.
RHEINLANDER. Bright salmon-pink.
R. P. STRUTHERS. Cherry-red; suffused salmon.
SPECIAL FRENCH. Soft pink; large trusses.
THOR. Deep salmon-pink; tall.
VESTA. (New). Rich bright red. 50c each.
VON HOCHBERG. Brilliant deep crimson.
WIDAR. Rosy violet with light center. 1 of each variety, 22 in all, for only \$4.50.

Above varieties, 25c each; 6 for \$1.10, unless otherwise noted. Mixture (our selection), \$1.50 per 12; \$7.50 per 50.

Special Offers in Perennials

- Achillea, The Pearl.** 3 for 40c.
Aquilegia (Columbine). 3 for 40c.
Canterbury Bells. 3 for 45c.
Columbine. 3 plants, 40c.
Coreopsis. 3 plants, 35c.
Delphinium Seed. 15c per pkt.
Delphinium (Chinese). 4 for 40c.
Delphinium. Gold Medal Hybrids. 3 for 45c; 10 for \$1.25.
Digitalis in Assortment. 3 for 45c.
Gaillardia. 3 for 40c.
Gypsophila Paniculata. 3 for 45c.
Hemerocallis (Day Lily). 3 for 45c.
Hollyhocks in Assortment. 4 for 45c.
Hollyhoek Seeds. 15c per pkt.
Iris in Assortment. 6 for 45c.
Lilies. 2 Tiger, 1 Elegans, 1 Regale, \$1.00.
Phlox in Assortment. 3 for 40c.
Platycodon in Assortment. 3 for 35c.
Peony. Red, white, and pink. 50c each; 3 for \$1.25.
Pyrethrum. 3 plants, 35c.

Special Lily Offer

4 Elegans 4 Regal 4 Tiger
12 Lilies \$2.00

Special Iris Offer

25 Iris Assorted, 3 or 4 colors \$1.25

Four Leading Hardy Plants

To introduce these wonderful plants we offer:

10 Gold Medal Hybrid Delphiniums \$1.25
10 Aquilegia, assorted colors 1.25
10 Gaillardia, Blanket Flower 1.25
10 Hardy Phlox, 6 or more colors 1.25
Strong 2-yr.-old. All 40 Plants Sent Postpaid for Only \$4.75.

Here is what one customer wrote us:

Anchorage, Alaska.

"Enclosed find . . . please ship the following. I have been quite pleased with the shrubs I received from you last spring. They came in excellent condition and all showed decided signs of growth almost immediately. They have been a good recommendation for your house."

MRS. A. L.

We have another good long letter from the same place in Alaska where we have shipped goods several seasons.

We have letters like this on file from nearly all states but room will not permit printing them.



Peonies

Peonies to color. Strong 3- to 5-eye divisions. Each 12
Red \$0.60 \$5.00
White55 4.50
Pink50 4.25

Six at twelve rate.

We grow over forty good varieties such as Midnight, Rubra Officinalis, etc. If you want certain kinds, write us your needs and we will quote prices. We can supply you with large strong roots.

Special Peony Offer

To introduce some of our good peonies by color we will send you four roots, 1 dark red, 1 red, 1 white, and 1 pink, postpaid, \$1.75.

Choice Varieties of Peonies by Name

- MARY BRAND. Dark red. \$1.25 each.
KARL ROSENFELD. Dark red. 90c each.
OFFICINALIS RUBRA. Very early red. 75c each.
MONS. JULES ELIE. Rose type; pink. 80c each.
LOUISE RENAULT. Largest pink. \$1.00 each.
RUBRA TRIUMPHANS. Red. 60c each.
FESTIVA MAXIMA. Best early white, center splashed with red. Largest size, 75c each.
MARIE LEMOINE. Creamy white, late, with very strong stalks. 95c each.
LONGFELLOW. Brilliant cherry color. \$2.00 each.
LA ROSIERE. Creamy white. Medium size, 90c each.
CANARY. Best light yellow. \$1.25 each.



Dahlias

For dozen rate multiply by 10.

We list here a few of the very best sorts, strong free bloomers and showy. These make nice plants for garden, flower bed or hedges. We offer in colors, red, pink, white, and yellow, mixed, at 15c each; \$1.50 per doz.

| | Each |
|--|--------|
| DELICATE. Pure white, wide petals, orange center, strong. Single flower | \$0.25 |
| MRS. CREEVY. A golden buff; a beauty; unequalled for decorative effects as cut flowers; single flower..... | .40 |
| CANARY. Clear yellow color; very fine flower; long petals. Peony flowering; long wide petals..... | .40 |
| MINNIE BAXTER. Deep maroon color, good as a cut flower, beautiful; one of the best..... | .25 |
| ETHEL. Maroon; velvety crimson, very showy variety | .50 |
| AMERICAN BEAUTY. Rich, ruby red (hybrid show)..... | .25 |
| BALL OF GOLD. Yellow, little smaller flowers than the Yellow Duke | .20 |
| DR. TEVIS. A novelty; beautiful shade of soft salmon-rose, suffused with old gold; immense flowers | .50 |
| DREER'S WHITE. An excellent white Dahlia, strong bushy plants, makes fine hedges; color glistening white. Hybrid show variety; blooms immense size, often measure over 6 inches across..... | .25 |
| MRS. MILLER. A beautiful purple flower on long stems; do not miss this one..... | .25 |
| SYLVIA DICKY. Mauve-pink; good variety, very showy, large flowers..... | .40 |
| YELLOW DUKE. Clear yellow, large flowers and free bloomer. Show..... | .30 |
| POMPON or BOUQUET DAHLIA. A very small dahlia flower, low growing; nice for borders, Isabella, orange-scarlet at..... | .25 |
| MILLIONAIRE. Largest pink. Decorative..... | .50 |
| BREAK O' DAY. Cream. Decorative | .50 |
| PRIDE OF CALIFORNIA. Large scarlet. Decorative..... | .40 |
| GLADYS SHERWOOD. Fine white. Decorative..... | .50 |
| MINA BURGLE. Deep red. Decorative..... | .50 |
| MRS. EDNA SPENCER. Lavender cactus..... | .50 |
| U. S. AMERICA. Old gold. Decorative..... | .50 |
| SUNSET GLOW. Red and gold cactus | 1.00 |
| ATTRACTION. Large, pink cactus..... | .50 |
| MRS. C. H. BRECK. Variegated..... | .50 |

Selected Flower Seeds

6c per pkt., prepaid.

| | |
|-------------------|----------------------|
| Ageratum | Mignonette |
| Alyssum | Morning Glory |
| Antirrhinum | Nasturtium |
| Asters | Pansy |
| Bachelor Buttons | Petunia |
| Balsam | Poppy, Eschscholtzia |
| Calendula | Poppy, Shirley |
| Candytuft | Portulaca |
| Columbine | Scabiosa |
| Cosmos | Stocks |
| Delphinium | Strawflower |
| Dianthus or Pinks | Sweet Peas |
| Gaillardia | Sunflower |
| Hollyhock | Verbena |
| Lobelia | Zinnia |
| Marigold | |



Anna Eberius.



America.



Mrs. Frank Pendleton

Gladiolus

One dozen at the price of 10; 6 at the price of 5, unless otherwise noted. Gladiolus bulbs sent postpaid.

- ANNA EBERIUS.** Deep rhodamine-purple shading into very deep Bordeaux center. 2 for 10c.
- AMERICA.** Soft lavender-pink. 6c each; large size, 4 for 20c; medium size, 6 for 20c; small size, 50 for 50c.
- BATTLE CREEK.** Deep violet, a little deeper at the throat. 8c each; 3 for 20c.
- BARON J. HULOT.** Deep violet-blue. 10c each; 3 for 25c.
- BLUSHING BEAUTY.** Blush pink. 12c each; 3 for 35c.
- BLACKHAWK.** Rich maroon. 10c each; 4 for 30c.
- BUTTER BOY.** (Primulinus). Clear yellow. 10c each; 3 for 25c.
- BURBANK MIXTURE.** A wonderful mixture of glads. Some novelties. 25c each; 6 for \$1.00.
- BUCKEYE.** Rose-pink with tint of old rose at edge of petals. 10c each; 4 for 25c.
- BUMBLE BEE.** Salmon-rose-pink. 10c each; 4 for 25c.
- CHICAGO WHITE.** White with lavender markings. 5c each; 8 for 25c.
- DR. MOODY.** Early outstanding lavender. 15c each.
- DR. F. E. BENNETT.** Brilliant scarlet. 10c each; 3 for 25c.
- DREAM.** Deep salmon-red. 10c each; 3 for 25c.
- ELIZABETH TABOR.** Rosy pink on white ground. 8c each; 4 for 25c.
- EVELYN KIRTLAND.** Rose-pink. 3 for 15c.
- FIRE RIBBON.** Rich fiery red. 8c each; 4 for 30c.
- GIANT NYMPH.** Light rose-pink with creamy yellow throat. 12c each; 4 for 35c; 50 for \$3.50.
- GIANT WHITE.** 10c each.
- GOLDEN FRILLS.** Deep, rich, daffodil-yellow with slight pink lines on lower petals. 10c each; 4 for 25c.
- GOLDEN KING.** Golden yellow with crimson blotch. 10c each; 3 for 25c.
- GLORY MIXTURE.** 8c each; \$4.50 per 100.
- GENERAL JOFFRE.** Maroon-red with orange splotches. 2 for 25c.
- GOSHEN.** Silvery rose-pink color with rose-red blotches. 12c each.
- HALLEY.** Bright salmon. 2 for 10c; \$3.50 per 100.
- HENRY FORD.** Dark rhodamine-purple shading into deeper tones near center. 12c each; 3 for 25c.
- HIGHLAND LADDIE.** Beautiful pleasing pink. 10c each; 4 for 25c.

Swedberg Nursery, Battle Lake, Minnesota

GLADIOLUS—Continued.

- HERADA.** Pure mauve. 7c each; 5 for 25c.
IMMENSITY. Bright salmon color. 12c each; 3 for 30c.
INDIAN. Deep aniline or Indian red. 10c each; 3 for 25c.
INDIAN SUMMER. Blush or light lavender-pink on white ground. 25c each.
INTENSITY. Rich, deep, bright red. 35c each; 2 for 50c.
JOHN T. PIRIE. Mahogany-brown with yellow bordered dark mahogany throat. 20c each; 3 for 40c.
LILY WHITE. Pure white. 10c each; 4 for 25c.
LE MARECHAL FOCH. Beautiful shade of light pink. 8c each; 5 for 25c.
LOUISE. Bright blue-lavender with wine-colored blotch. 10c each; 3 for 25c.
LOS ANGELES. Beautiful La France color with feathery purple tinge at throat. 8c each; 5 for 30c.
MRS. FRANK PENDLETON. Rose-pink, shading to paler pink at throat. 6c each.
MONA LISA. Pale, soft rose-pink or blush white. 10c each; 3 for 25c.
MRS. DR. NORTON. Soft yellow with yellow tint at throat. 8c each; 5 for 30c.
MRS. H. E. BOTHIN. Light geranium-pink. Flame scarlet center. 10 for 60c.
MRS. FRANCIS KING. Brilliant flaming scarlet. 8c each; 2 for 15c; 4 for 25c.
MR. W. H. PHIPPS. Bright rose with stripes of deeper pink. 10c each; 4 for 30c.
MAGIC. Lavender-blue with rich purple throat blotch. 8c each.
MRS. LEON DOUGLAS. Rose-colored with stripe of deeper pink. 10c each; 4 for 30c.
OAK PARK. Best white. 10c each; 4 for 30c.
PAGEANT. Delicate rose-pink ground flaked rich, showy rose-red, throat fine shading of yellow. 20c each.
PURPLE ROSE. 15c each; 3 for 30c.
PURPLE GLORY. Velvety maroon. 12c each; 4 for 30c;
PEACE. White with violet blotch on lower petal. 8c each; 5 for 30c.
PRINCIPINE. Crimson flowers with white blotch. 8c each; 6 for 30c.
PINK CLOUD. Soft rose-pink. Deeper rose at throat. 15c each; 2 for 25c.
ROSE ASH. Corinthian-red shading into ashes of rose color. Lower petals light yellow flecked with ruby. 2 for 15c.
ROSY GLOW. Rose-pink on white ground. 10c each.
SUNSET GLOW. Deep orange-salmon. Lower petals finely marked with red. 10c each.
SPLENDORA. Very dark wine-black. 8c each.
SCARLANO. Dark blood-red. 10c each.
SWEDBERG'S SEEDLINGS. 10c each; 50 for \$2.50.
TARO. Violet-red, lighter in throat. 20c each.
TWILIGHT. Cream-white with pink on lower petals. 12c each.
THOMAS EDISON. Very dark, red ruffled. \$1.25 each.
TYRIAN BEAUTY. Pure Tyrian-rose, upper petals slightly lighter. 15c each.
TACOMA WASHINGTON. Apple-blossom pink. Wonderful spike, as many as 12 blossoms open at one time. \$2.00 each.
YELLOW WONDER. Bright yellow. 10c each.
YELLOW GLORY. Bright yellow-orange. 10c each.
WANETA WASHINGTON. Large salmon-pink. \$1.00 each.

See Special Gladiolus Offers on Page 20.

Derrisol Summer Spray

Recommended by experiment Stations. One ounce bottle, 40c by mail. Makes 6 gallons of spray.

SCALECIDE The complete dormant spray. Pleasant to use. Non-poisonous. Kills scale, insects, eggs, larvae and disease cankers and fungous spores wintering on the plant. Mixed instantly. Dilute 1-15. Price per gal, \$1.75.

SULFOCIDE For all kinds of fruits, vegetables, and flowers. Controls: Apple scab, brown rot of peaches, plums and cherries; blight and rot of potatoes, tomatoes and melons; mildew and rust of flowers and shrubs. Convenient, economical, effective. Dilute 1-200. Quart, \$1.00.

Be sure to write for Spray Books and Pamphlets—they are free.



Special Gladiolus Offers

See Pages 19 and 20 for Gladiolus List.

1 each of all glads listed under 35c each (value over \$7.50),
60 bulbs for ONLY \$4.50.

3 each of all glads listed under 35c each,
180 bulbs for ONLY \$11.25.

2 Thomas Edison and 40 other bulbs
included free in this offer.

We sell medium sized bulbs, 3 for the price of one in most varieties. Example: Pink Cloud is 15c each for first size; medium size, 3 for 15c. Above refers to pages 18 and 19.

\$1.00 Gladiolus Assortments

Each assortment will be of one variety but the bulbs will be mixed sizes, from about $\frac{3}{4}$ inch up to $1\frac{1}{4}$ inch or so. The idea is that different size bulbs bloom at different times so by planting the assorted sizes you get a long season of bloom from the one planting.

Please order just as offered. Don't change sizes, quantities, or price.

Please give the assortment number in front of the name, also the variety when ordering long season assortments.

| Asst. No. | | Bulbs for \$1.00 |
|-----------|--|------------------|
| 1 | A. E. Kunderd, Immense; salmon-rose | 13 |
| 2 | Aflame, Primulinus; begonia-rose | 10 |
| 3 | Aida, Rich, dark violet-blue | 6 |
| 4 | Apricot Glow, Apricot color | 17 |
| 5 | Ave Maria, Blue | 4 |
| 6 | Berty Snow, Large lavender | 9 |
| 7 | Betty Nuthall, Coral; full; good | 6 |
| 8 | Charles Dickens, Bright radiant purple | 16 |
| 9 | Coronado, White, purple throat | 4 |
| 10 | Coryphee, Soft rose-pink | 4 |
| 11 | Dr. Moody, Large, splendid lavender | 10 |
| 12 | Dr. Nelson Shock, Tyrian rose..... | 13 |
| 13 | Frank J. McCoy, Large pink | 4 |
| 14 | Gloriana, Rich salmon | 24 |
| 15 | Golden Dream, Rightly named | 15 |
| 16 | Heavenly Blue, Name gives it away | 9 |
| 17 | Jane Addams, Very large, lavender | 8 |
| 18 | Jeorg's White, Largest white | 9 |
| 19 | Jubilee, Large, lavender-pink | 3 |
| 20 | Loyalty, Good yellow, sturdy | 4 |
| 21 | Marmora, Smoky lavender | 7 |
| 22 | Morocco, Almost black | 4 |
| 23 | Mary Frey, Lavender with ruby blotch | 14 |
| 24 | Mary Jane, Silvery lavender | 12 |
| 25 | Minuet, Large, blue-lavender | 14 |
| 26 | Miss Des Moines, Lavender with yellow throat | 4 |
| 27 | Mother Machree, Unusually tall, smoky | 3 |
| 28 | Mrs. Douglas, Large, pink | 27 |
| 29 | Mrs. P. W. Sisson, Famous ruffled pink | 27 |
| 30 | Mrs. Van Konynenburg, Light blue-violet | 18 |
| 31 | Mr. W. H. Phipps, Immense, pink | 23 |
| 32 | Nancy Hanks, Apricot-orange | 24 |
| 33 | Olive Goodrich | 16 |
| 34 | Orange Wonder, Large orange | 6 |
| 35 | Paul Pfitzer, Brilliant velvety purple | 7 |
| 36 | Pfitzer's Triumph, Large, orange-red | 10 |
| 37 | Prof. Keesom, Salmon with flame marking | 7 |
| 38 | Rita Beck, Large, pink | 10 |
| 39 | Royal Lavender, Dark lavender | 5 |
| 40 | Ruffled Gold, Bright yellow | 8 |
| 41 | Salbach's Pink, Large, deep pink | 4 |
| 42 | Spirit of St. Louis, Carnelian red | 11 |
| 43 | Stuttgardia, Orange-scarlet | 3 |



Frau Karl Druschki.

Roses

Hybrid Perpetual Roses and Eskimo Roses, 75c each.

FRAU KARL DRUSCHKI. Snow white, very large, perfect form. A vigorous grower and free bloomer. Bright, heavy foliage.

GENERAL JACQUEMINOT. This might be called the rose for the million, for it is still a universal favorite. Bright crimson-scarlet, exceedingly rich and velvety.

MARGARET DICKSON. Creamy white.

MRS. JOHN LAING. Immense blooms of soft, clear pink, very fragrant, on stiff, stocky stems. Produces a longer succession of blooms than most of its class and the bush is not quite so tall and rampant.

MAGNA CHARTA. Bright, clear pink, flushed with violet-crimson; flowers large, fine form, sweet, very double and free bloomer.

MARSHALL P. WILDER. Dark red; dark crimson.

ULRICH BRUNNER. Large, cherry red.

BABY RAMBLER. Red. Dwarf. Flowers in clusters.

Rosa Rugosa-Eskimo Hardy Roses

Very Double

HANSA. Deep red.

BELLE POITEVINE. Bright rose-pink.

AMELIE GRAVEREAUX. Dark purplish red.

F. J. GROOTENDORST. Red flowers in clusters.

RUGOSA HYBRID. Brilliant red clustered flowers.

CONRAD F. MEYER. Clear, silvery pink.

SIR THOMAS LIPTON. Snow white.

MME. VILLEMENOT. Rose-pink, large.

All these hardy Eskimo Roses will live anywhere without protection.

Climbing Roses

CRIMSON RAMBLER. Crimson color.

EXCELSA. Dark red, strong grower.

SEVEN SISTERS. Blush pink.

Extra strong Climbing Roses, 60c each.

Climbing Vines

CLEMATIS, Paniculata. White. 50c each.

C., Jackmani. Red. \$1.00 each.

AMPELOPSIS (Boston Ivy). Dense ivy-like leaves. 50c each.

VIRGINIA CREEPER (American Ivy). Vigorous grower. 50c each.

Window Box Plants

COLEUS. 15c each.

GERANIUMS. Select. 40c each.

VINCA. Variegated vine. 35c each.

BLUE LOBELIA. Everblooming. 15c each.

PETUNIA. All colors. 15c each.

SWEET ALYSSUM. White. 15c each.

Ready for delivery May 20th.

Home Beautifying Suggestions

Let us help you—the cost will be very small and if the stock is bought from us, no charge is made.

Make up a pencil sketch, mark all lines, roads, alleys, trees, shrubs all ready in place, if any.

Attractive landscape or home plantings do not “happen” but require forethought and knowledge of plant life. Our knowledge and experience is at your command.

If you are interested in improving your home grounds, or prefer to work out your own problems we have a number of booklets that will prove of interest such as the one listed below.

How to Plant an Outdoor Living Room

32 pages, 7 by 10 inches, with colored illustrations and describing many sorts not listed otherwise; or adapted to more favorable sections.

The above will be sent for 15c in stamps.



Iris

Rating about 70 or better.

BLUE PARFLEUR. White, spotted blue.

C. A. PFEIFFER. Blue and violet.

FLORENTINA ALBA. White, flushed lavender.

GERTRUDE. Violet-blue.

GYPSY QUEEN. Old gold and maroon.

HONORABILIS. Yellow and mahogany.

LOHENGRIN. Soft mauve.

MME. CHEREAU. White, blue border.

MITHRAS. Yellow and maroon.

MONSIGNOR. Violet and purple.

MRS. H. DARWIN. White, veined violet.

PARISIENSIS. Early, purple.

PERFECTION. Blue and purple.

QUEEN OF MAY. Rose.

RHEIN NIXE. White and violet-blue.

SHERWIN-WRIGHT. Bright yellow.

Above varieties, 20c each; 2 for 30c; 5 of one variety for 60c.

IRIS—Continued.

Iris by Color, Unnamed, for Mass Planting

20c per 2; 45c per 5; \$1.75 per 20.

BLUE.
PURPLE.
WHITE.
LAVENDER.
YELLOW AND YELLOW SHADES.
BRONZE AND ASSORTED SHADES.

Iris With High Ratings

80 up to 92.

ALCAZAR. Bluish violet. 20c each.
AMBASSADEUR. Fawn and purple. 25c each; 5 for 90c.
AMBER. Fine yellow. 75c.
ANN PAGE. Pale blue. 75c each.
APHRODITE. Violet-pink. \$1.50 each.
BRUNO. Rose tinted and purple. \$1.50 each.
B. Y. MORRISON. Lavender-violet. 50c each.
CRUSADER. Blue. 50c each.
DEJAH. Dark silvery blue. 50c each.
DREAM. Fine pink. 40c each; 3 for 85c.
EVADNE. Violet-rose. \$1.00 each.
HARMONY. Deep purple-blue. 50c each.
HER MAJESTY. Rosy lavender-pink. 15c each.
IMPERATOR. Red-violet. \$1.00 each.
LADY BYNG. Pale lavender. 50c each.
LORD OF JUNE. Pale lavender-violet. 35c each; 4 for \$1.00.
MME. HENRI CAYEAUX. Reddish violet-purple. \$2.00 each.
MEDRANO. Reddish copper. 50c each.
MRS. CUTHBERTSON. Rosy purple. \$1.00 each.
MORNING SPLENDOR. Petunia-violet. 75c each.
MOTHER OF PEARL. Wonderful gray-blue and changeable lavender. 25c each; 5 for \$1.00.
QUEEN OF MAY. Rose color. 15c each; 3 for 40c.
RAMONA. Petunia-violet. \$1.00 each.
SALONIQUE. Cream and red-purple. 40c each; 2 for 75c.
TROADES. Dull rose. \$1.00 each; 2 for \$1.50.
YELLOW MOON. Light creamy yellow. 75c each; 2 for \$1.25.

Darwin Tulips

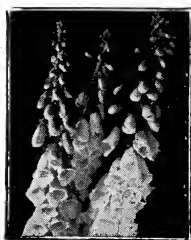
Both Imported and American Grown

3 each at dozen rate.

BARONNE DE LA TONNAYE. Bright rose. 70c per doz.
BARTIGON. Scarlet. 60c per doz.
CLARA BUTT. Salmon-pink. 50c per doz.
CENTENAIRE. Lilac-pink. 65c per doz.
FARNCOMBE SANDERS. Brilliant scarlet. 60c per doz.
GRETCHEN. Silvery rose. 75c per doz.
INGLESCOMBE YELLOW. Yellow. 60c per doz.
LE NOTRE. Clear rose. 70c per doz.
LA TULIPE NOIRE. Deep maroon-black. 70c per doz.
MASSACHUSETTS. Rose. 75c per doz.
MME. KRELAGE. Lilac-rose. 60c per doz.
PHILIPPE DE COMINES. Velvety black. \$1.00 per doz.
PRIDE OF HAARLEM. American Beauty shade. 60c per doz.
PRINCESS ELIZABETH. Deep pink. 60c per doz.
PROF. RAUWENHOF. Cherry-rose. 75c per doz.
WM. COPELAND. Lavender-blue. 65c per doz.
WM. PITT. Glowing red. 70c per doz.
MIXED DARWIN TULIPS. \$5.00 per 100. We use above varieties.
COTTAGE or MAY-FLOWERING TULIPS. In six or more colors—separate or mixed. 70c per doz.; \$4.75 per 100.
BREEDER TULIPS. Rare colorings in six or more separate colors. \$5.50 per 100.
DOUBLE EARLY, SINGLE EARLY, PARROT or DRAGON TULIPS. 70c per doz.; \$5.00 per 100.
KEIZERSKROON. Single early; bright yellow, and scarlet. \$1.00 per doz.; 100, \$7.50.



Aquilegia.



Digitalis.



Gypsophila.

(See Perennial Plants on page 14).

Hyacinths

Our collection of Hyacinths consists of the best forcing varieties which are also excellent for outside bedding. All first size.

ARENTE ARENSEN. Pure, snow-white with thick waxy bells. Early forcer.

GRANDEUR A MERVEILLE. Rosy white or a blush pink.

LA GRANDESSE. Intense pure white, fine formed bells.

L'INNOCENCE. Pure white and an excellent forcer. Known as the best white.

GRAND MAITRE. A wonderful deep porcelain-blue.

KING OF THE BLUES. Deep glossy blue. The best blue.

QUEEN OF THE BLUES. Light blue with silvery appearance. A splendid flower.

JOHAN. Pale porcelain-blue. Excellent for bedding.

GERTRUDE. A rosy pink. A favorite among florists.

GIGANTEA. Blush pink, large broad truss.

MARCONI. Bright pink and shaded white. Fine for forcing.

QUEEN OF THE PINKS. Bright rosy rich pink. Very large.

KING OF THE YELLOW. Rich deep yellow with large bells. Late.

YELLOW HAMMER. Pure golden yellow. Early. The finest yellow.

Any of the above at 25c each; 5 for \$1.00; 12 for \$2.00.

Dutch Hyacinths

Select Holland Bulbs

The varieties or colors listed below have been selected for their free flowering qualities, and are especially suited for outdoor planting.

BLUE, PURPLE, WHITE, RED, and PINK. Each, 20c; 3 for 50c; 12 for \$1.75.

Other Dutch Bulbs

CROCUS. Fine mixed.

MUSCARI, Heavenly Blue (Blue Grape Hyacinths).

SCILLA SIBIRICA. Clear deep blue.

SNOWDROPS. Single.

SNOWDROPS. Double.

Each, 15c; 12 for 50c; 100 for \$3.00.

"EEZY WEAR" GARDEN GLOVES

Made from special imported hides processed to render them amazingly soft and pliable. Permit almost barehand freedom, yet provide complete all-leather protection. Ideal for garden.

Dirt-Proof—Durable—Washable

Four sizes: "SMALL" and "MEDIUM" for Women, "MEDIUM" and "LARGE" size for Men. Price, 75c a pair; 2 pairs for \$1.40. This is the first time we have ever offered an all-leather garden glove with these special qualities at such a low price, postpaid.

"ELECTRIMMER" HEDGE TRIMMER SPECIFICATIONS

Blade. Finest crucible steel cutter blade, 11 inches long.

Power. 1/2 H. P. Universal motor.

Housing. Motor and gear housing made of die cast aluminum.

Gears. Accurately machined highest grade gears.

Weight. 6 lbs.

Equipment. Electrimmer is furnished with 15 feet of the highest quality rubber-covered cord with bakelite switch. Additional cord can be furnished in any length with connectors.

Trim your Hedge in a short time—a durable machine.

Price, F. O. B. Factory, only \$39.50.